



NEWINGTON  
LONDON

2 Bedrooms

Apartment

Located in London

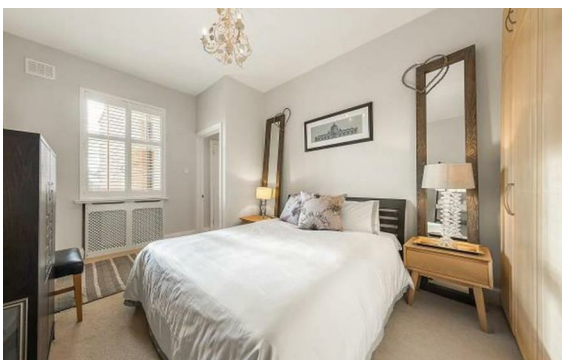
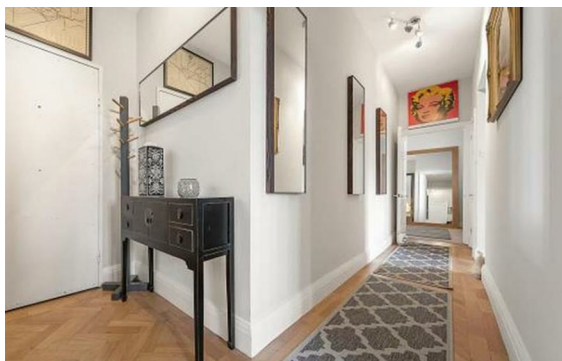
£860 Per Month



info@newingtonstates.com

<http://www.newingtonstates.com>

020 7724 2233



# NEWINGTON LONDON

60 Upper Montagu Street

London

W1H 1SN

020 7724 2233

[info@newingtonstates.com](mailto:info@newingtonstates.com)

Set within a popular and well-maintained portered building, this attractive apartment provides bright and contemporary living in the heart of Marylebone. The accommodation comprises a modern open-plan reception room with a fully fitted kitchen, two generous double bedrooms, and two stylish bathrooms.

The property is ideally located close to Marylebone Station, the boutiques and cafés of Marylebone High Street, Oxford Street's retail offerings, and the open green spaces of Regent's Park.

EPC Rating: D

## Energy Efficiency Rating: D

Agents Note: Whilst every care has been taken to prepare these particulars, they are for guidance purposes only. All measurements are approximate and are for general guidance purposes only and whilst every care has been taken to ensure their accuracy, they should not be relied upon and potential buyers/tenants are advised to recheck the measurements.

<http://www.newingtonstates.com>